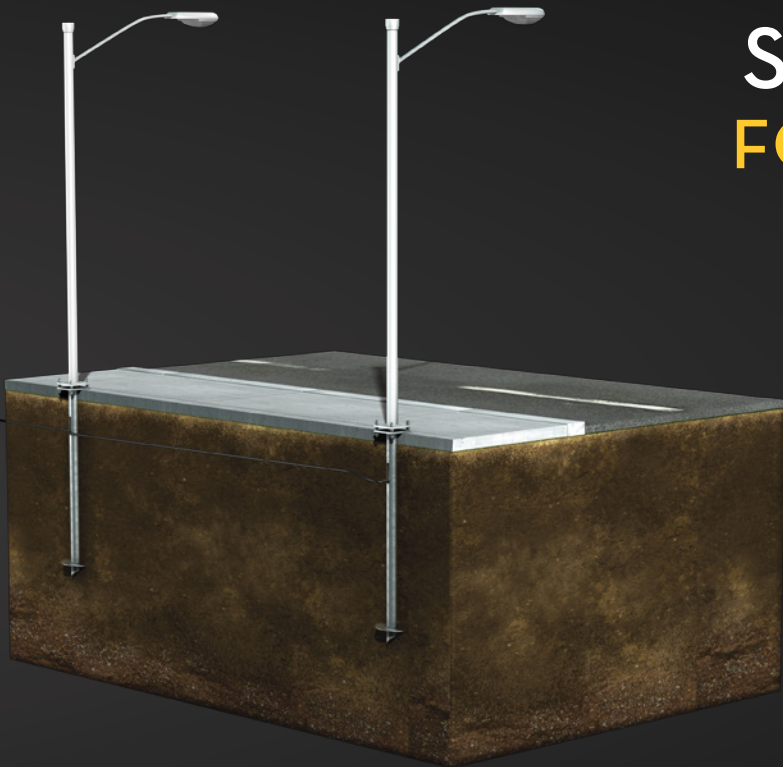


# GOLIATH **TECH**

## SCREW PILE SYSTEM

### HELICAL PILE SUPPORT SYSTEM FOR STREET LIGHTING, REGULAR AND ELECTRONIC SIGNS



**STEADFAST**



**RELIABLE**



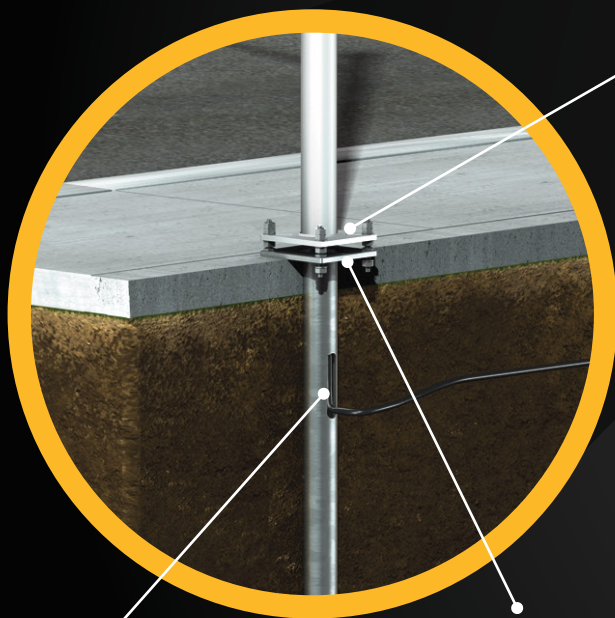
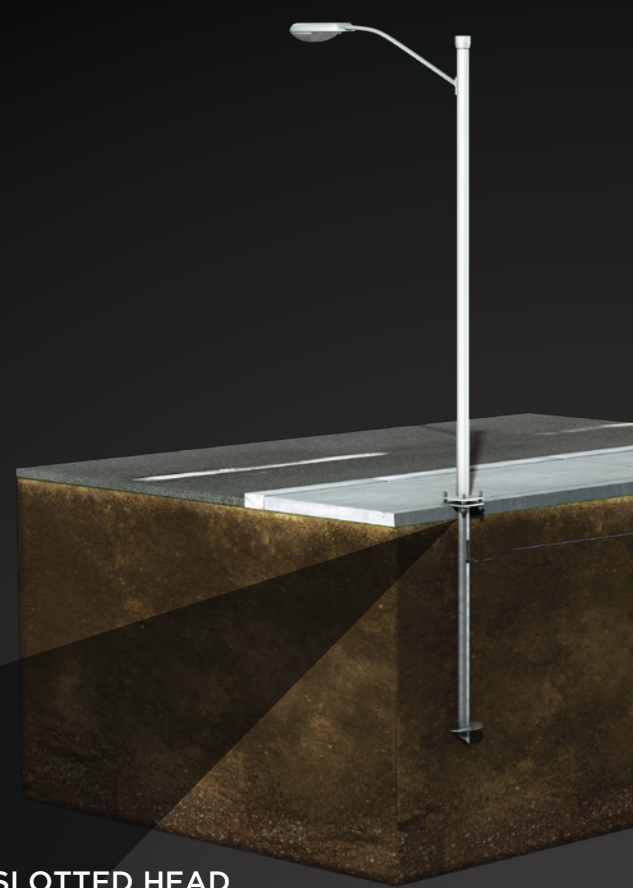
**PRECISE**

EXCLUSIVE ANCHORING SOLUTIONS

# SECURE, DURABLE PEDESTALS

Street lighting, regular signs, electronic signs, and other electronic pole-mounted products are key infrastructure investments for cities, towns and private companies—so durability and longevity are important factors. GoliathTech helical piles are an anchoring solution that will stabilize and support electronic pedestals in any soil or weather condition, which ultimately protects the investment over the long term.

Specifically designed to accommodate electrical cabling and meet industry-standard connection systems, GoliathTech helical piles are a better and easier solution than traditional concrete supports. Quick to install using only small equipment, the light or sign can be raised immediately because no drying time is required. Need to upgrade the light or change the sign? Not a problem: Equipment can be easily swapped without changing the below-ground supporting helical pile.



**SPECIALIZED SLOTTED HEAD  
ACCOMMODATES VARIOUS SIZES**

## SOLID ANCHORING PREVENTS MOVEMENT

Our 60 and 84-inch deep screw piles designed specifically to support light standards, illuminated signage, and other pedestal-mounted electronic equipment, are installed deep into stable soil, solidly supporting them in any type of soil or environmental condition.

They feature tube diameters from 1-7/8" to 12-3/4", for optimal lateral performance. Our precise engineering and installation method ensures that over time the light or sign will remain extremely stable. These helical piles are specifically engineered to accommodate electrical cabling via a channel inside the tube and a side access slot.

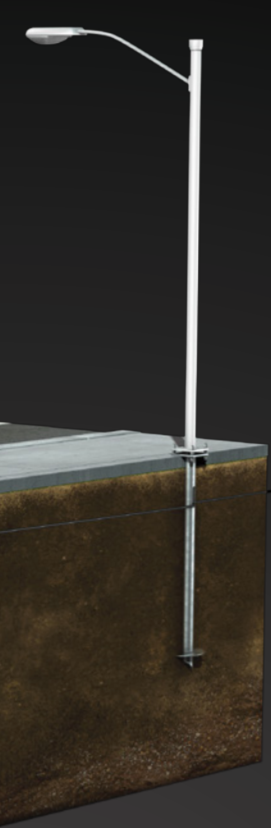
**ELECTRICAL CABLE  
PASS-THROUGH**

**INDUSTRY STANDARD  
CONNECTION SYSTEM**

## INSTALLATION IN HOURS **USING SMALL EQUIPMENT**

- ✓ NO CONCRETE DELAYS OR DRY TIME
- ✓ NO SOIL DISPLACEMENT OR REMOVAL
- ✓ NO WEATHER DELAYS

- ✓ ACCOMMODATES A WIDE RANGE OF ELECTRONIC EQUIPMENT
- ✓ FULLY ENGINEERED TO MEET LATERAL REQUIREMENTS
- ✓ ISO 9001:2015 CERTIFIED



LIGHT / SIGN



## QUALITY ENGINEERING

- 1 SPECIALIZED BASE PLATE ACCOMMODATES RANGE OF LIGHTS/SIGNS**
- 2 THREADED RODS TO LEVEL PEDESTAL ASSEMBLY**
- 3 ELECTRICAL CABLE PASS-THROUGH**
- 4 POLYURETHANE CORE PREVENTS HEAVING GROUND AROUND HELIX**

## ADJUSTABLE & FLEXIBLE SOLUTIONS

- Solution fits various light designs and sizes
- Calibrated torque-reading equipment ensures precise fit
- Breakaway hardware connection available

## COMPRESSION & TENSION HANDLING

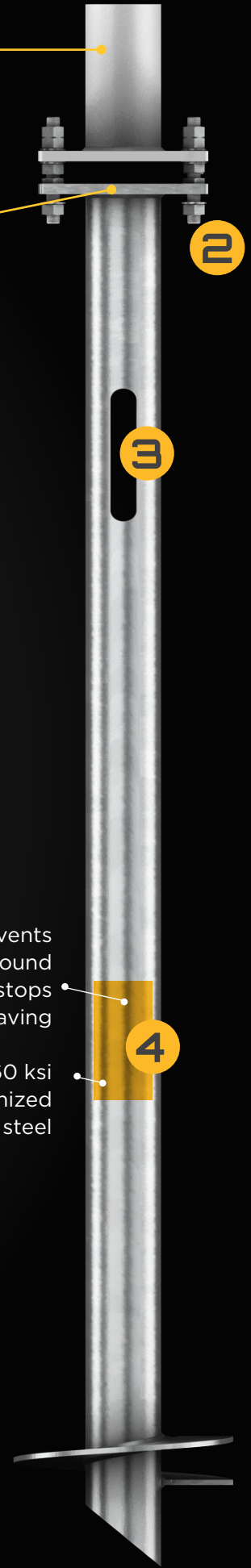
- Industry-leading rod and pile compression resistance
- Extension and mounting bolts feature high shear capacity
- Superior load-bearing capacity
- High tension handling of rods and tube to prevent movement

## STABILITY & ENVIRONMENTAL RESISTANCE

- Helix diameter ensures optimal stability
- Integrated head and tube design prevents lateral movement
- Performance in cohesive & cohesionless soil
- Fights frost and thawing soil movements from the inside out

Polyurethane prevents freezing ground around helix and stops winter heaving

60 ksi galvanized steel



# WE ARE GOLIATHTECH

## THE PILLARS OF YOUR PROJECTS

### GOLIATHTECH'S INSTALLATION PROMISE

Our network of certified installers put their vast experience to work to guarantee optimal anchoring of each pile.

Because the quality of an installation is as important as the quality of the piles, all GoliathTech installers have received training at our factory and are certified technicians on the installation of our products.

Installers use mini excavators equipped with our proprietary calibrated torque-reading equipment, which allows them to determine the exact tension and compression values on each site. Their expertise ensures that the screw piles and the supported structure are built to last.

**BACKED BY THE GOLIATHTECH  
PROMISE, GUARANTEED!**

## QUITE SIMPLY SUPERIOR.

For more information on our products  
or to find a certified GoliathTech  
installer, please contact us:

**TOLL FREE: 1.855.743.4777**  
**INFO@GOLIATHTECHPILES.COM**

**WWW.GOLIATHTECHPILES.COM**

