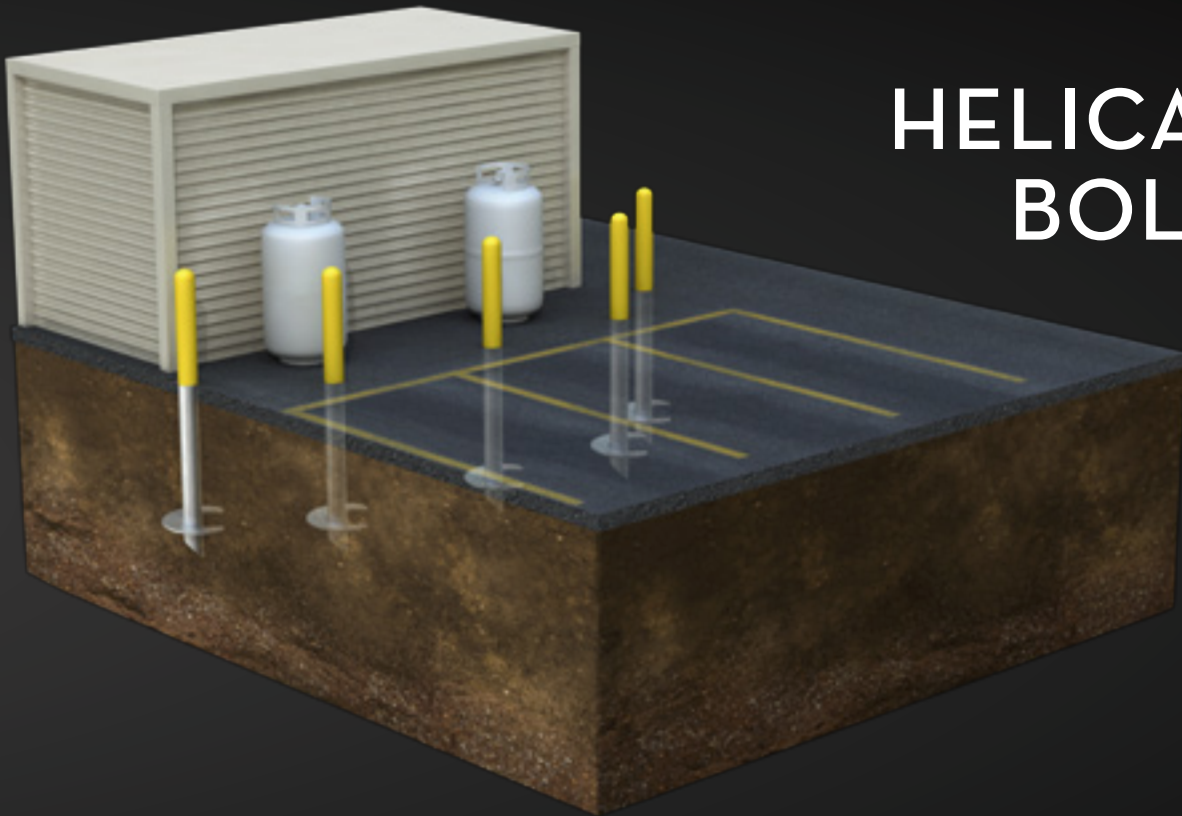


GOLIATH **TECH**

SCREW PILE SYSTEM

HELICAL PILE BOLLARDS



STEADFAST

RELIABLE

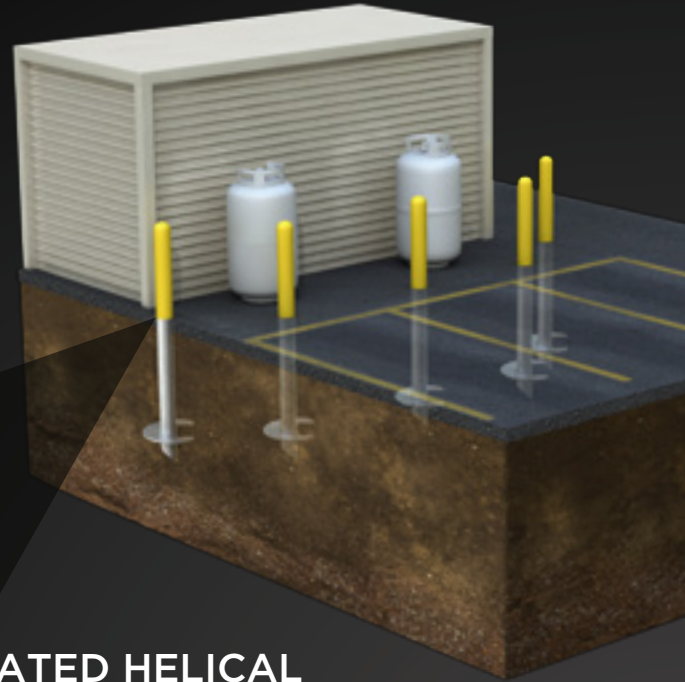
PRECISE

EXCLUSIVE ANCHORING SOLUTIONS

SOLID, PROTECTIVE BOLLARDS

Our helical pile bollards are installed in areas such as parking lots or walkways in order to protect structures—utilities boxes, natural gas equipment, storefronts, and shopping cart return areas, for example—from vehicle damage. Because durability and longevity are important factors, GoliathTech helical pile bollards are an ideal solution, remaining stable in any soil or weather condition.

Traditional poured concrete bollards are outdated. Helical pile anchored bollards are a better and easier solution. GoliathTech piles are quick to install using small equipment, are removable and movable, and perform exceptionally well over the long term—making them a smart investment.



INTEGRATED HELICAL PILE + BOLLARD

SOLID ANCHORING PREVENTS MOVEMENT

Our screw pile bollards are installed deep into stable soil, so they remain solid and resistant to lateral movement and environmental conditions over the long term. An optional concrete core adds an extra dimension of stability. GoliathTech bollards are available with optional high-visibility safety yellow color.

They feature diameters of 9 to 21 inches on every helix, for optimal compression and tension performance. Our precise engineering and installation method ensures that over time the bollards will remain stable.

INSTALLATION IN HOURS USING SMALL EQUIPMENT

- ✓ NO MESS
- ✓ NO EXCAVATION OR CONCRETE BASE REQUIRED
- ✓ NO WEATHER DELAYS
- ✓ NO SOIL DISPLACEMENT OR REMOVAL
- ✓ REMOVABLE AND REUSABLE
- ✓ ISO 9001:2015 CERTIFIED

QUALITY ENGINEERING

- 1 4'-6' ABOVE-GROUND, IMPACT-RESISTANT BOLLARD**
- 2 HOLLOW CORE FOR OPTIONAL CONCRETE FILL**
- 3 LARGE DIAMETER BASE PREVENTS LATERAL MOVEMENT**
- 4 INTEGRATED 6'-12' BELOW-GROUND HELICAL PILE**

GROUND

STABILITY AND ENVIRONMENTAL RESISTANCE

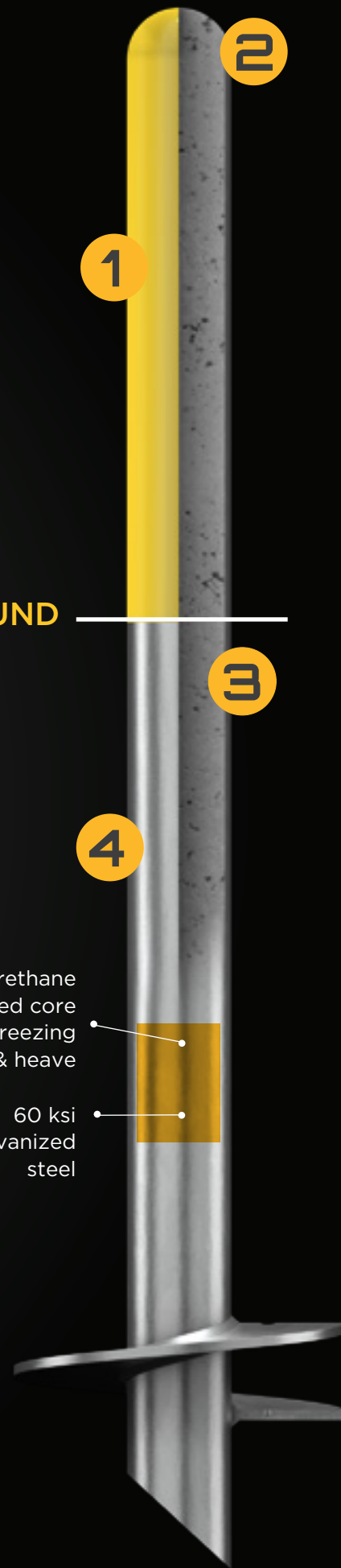
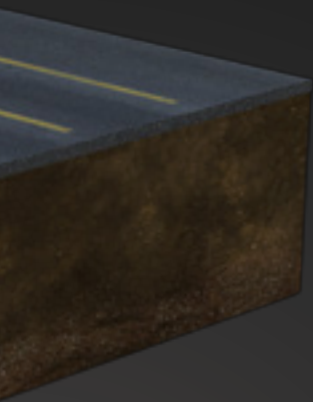
- Superior impact resistance
- Integrated one-piece bollard and pile design prevents lateral movement
- Helix diameter from 9" to 21" ensures optimal stability in cohesive & cohesionless soil
- Fights frost and thawing soil movements from the inside out

LATERAL HANDLING

- Calibrated torque-reading equipment ensures precise fit
- Contractor can adapt solution to fit each installation
- Trained installers guarantee optimal anchoring of each bollard

Polyurethane insulated core prevents freezing & heave

60 ksi galvanized steel



WE ARE GOLIATHTECH

THE PILLARS OF YOUR PROJECTS

GOLIATHTECH'S INSTALLATION PROMISE

Our network of certified installers put their vast experience to work to guarantee optimal anchoring of each pile.

Because the quality of an installation is as important as the quality of the piles, all GoliathTech installers have received training at our factory and are certified technicians on the installation of our products.

Installers use mini excavators equipped with our proprietary calibrated torque-reading equipment, which allows them to determine the exact tension and compression values on each site. Their expertise ensures that the screw piles and the supported structure are built to last.

**BACKED BY THE GOLIATHTECH
PROMISE, GUARANTEED!**

QUITE SIMPLY SUPERIOR.

For more information on our products
or to find a certified GoliathTech
installer, please contact us:

TOLL FREE: 1.855.743.4777
INFO@GOLIATHTECHPILES.COM

WWW.GOLIATHTECHPILES.COM

